



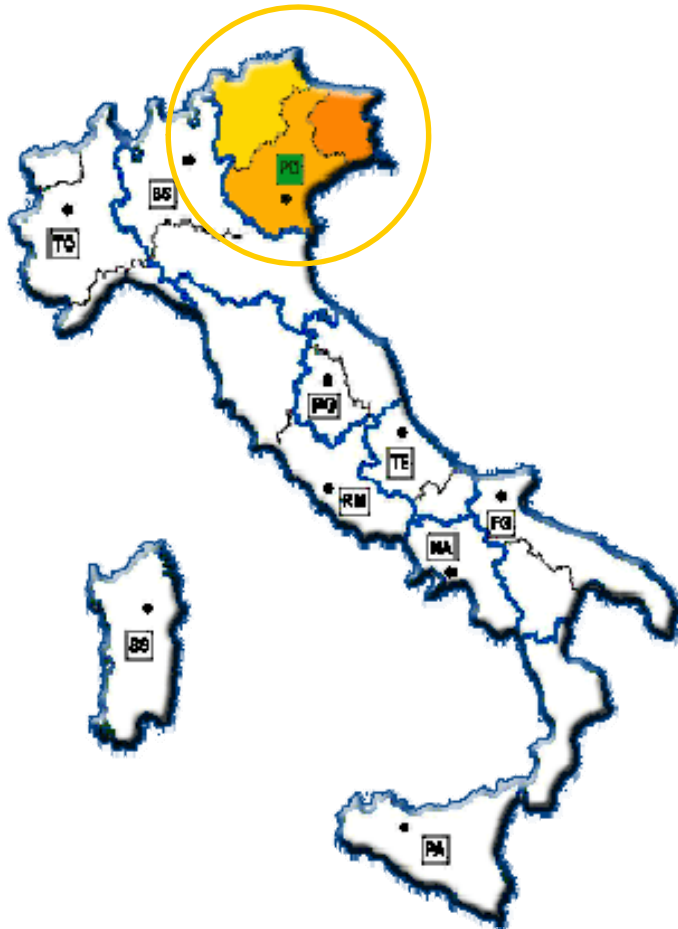
IZSVe: mission, activities and research



Matteo Morini



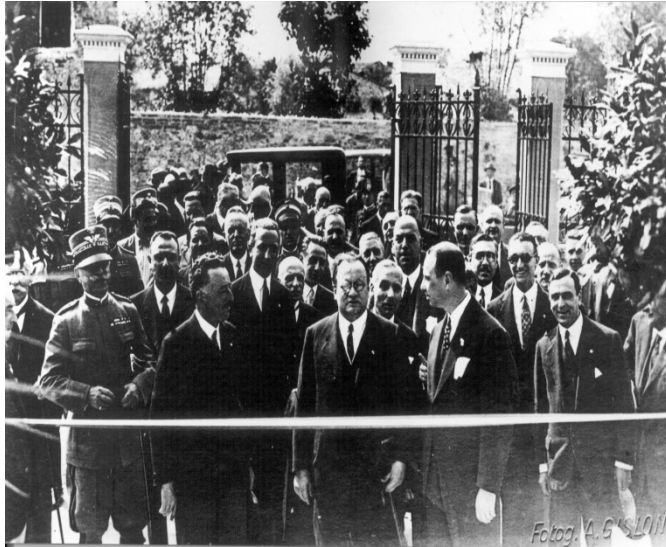
What is IZSVe?



Istituto Zooprofilattico Sperimentale delle Venezie (IZSVe) is a **public veterinary institute** and it is part of II.ZZ.SS. network in Italy.

Mission: to promote public health in the fields of **animal welfare and food safety**, also providing scientific and technical support to the central and regional authorities.

A look at the past ...



IZSve was officially inaugurated in **Padua, on June 14, 1929.**

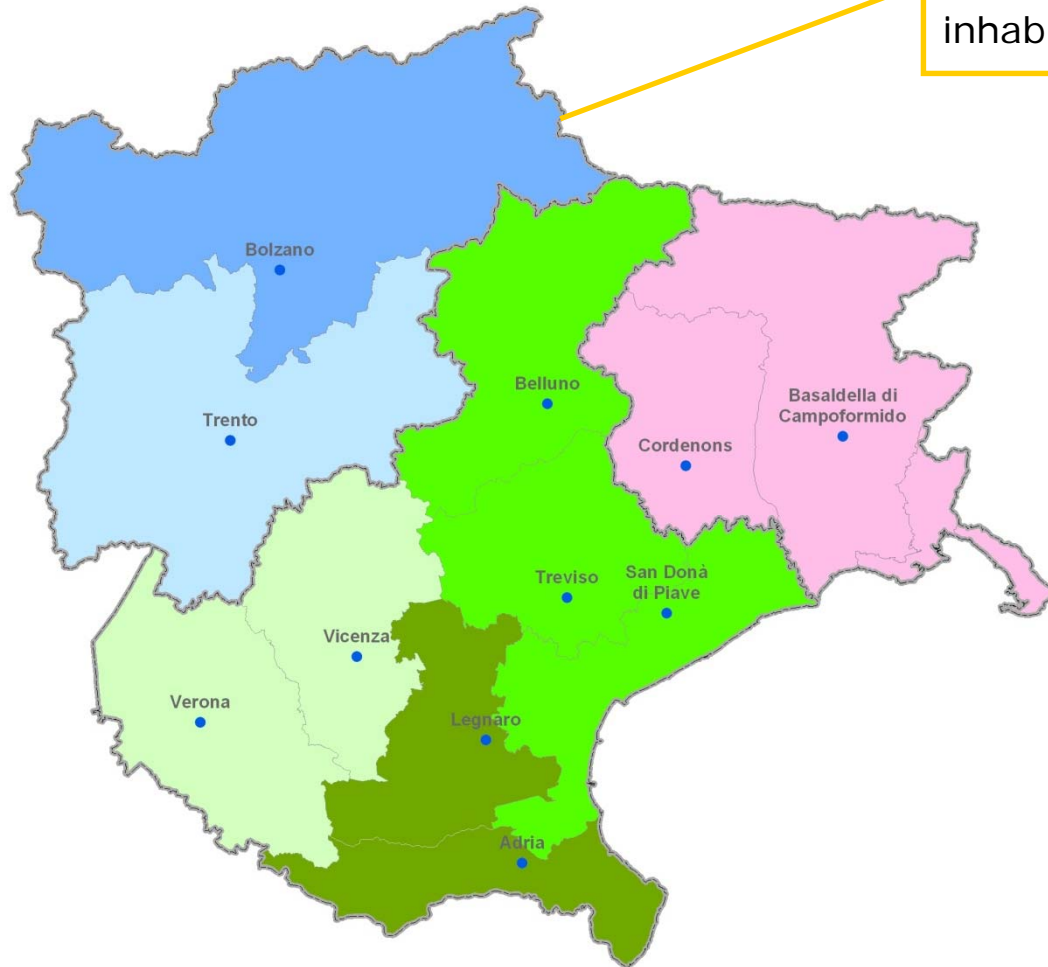
From 1929 to Fifties new peripheral diagnostic laboratories added in North-Eastern Italy (Veneto, Trentino Alto Adige and Friuli Venezia Giulia).

In **1995** the institute moved to its **current headquarters at Legnaro (PD).**



Local diagnostic labs

IZSve covers an area of about 40.000 km² where about 7 millions inhabitants live



✓ In addition to the central laboratories at Legnaro , the IZSve avails of the services of 10 local diagnostic labs located in the territories of the Veneto, Friuli Venezia Giulia, and Trentino Alto Adige



Activities

- ✓ diagnosis and research on infectious diseases of animals and on zoonosis
- ✓ controlling foods
- ✓ controlling animal feeds
- ✓ epidemiological surveillance and monitoring
- ✓ designing animal health schemes
- ✓ training personnel in the veterinary service
- ✓ production of biopharmaceutical products on behalf of the state, the regions and private parties.



Organization: central laboratories

1	Risk analysis and public health surveillance
2	Chemistry
3	Diagnostic services, histopathology, parasitology
4	Epidemiology
5	Research and innovation
6	Virology
7	Health awareness and communication
8	Optimization and control of food production



Examinations: some figures

In 2013, 2.279.557 tests were performed

- ✓ Animal health and epidemiological surveillance: **1.783.459 tests**
- ✓ Food safety: **165.203 tests**
- ✓ Animal hygiene: **26.193 tests**
- ✓ Research activities: **304.702 tests**





Research

... is the most effective tool for improving technical skill, scientific knowledge and international co-operation



Research programs are carried out in the field of:

- ✓ animal health and welfare
- ✓ infectious diseases of animals
- ✓ zoonosis
- ✓ food safety
- ✓ risk analysis & communication
- ✓ epidemiology.



Human resources



IZSVe has almost **700** employees.

The IZSVe personnel is composed by:

- ✓ **scientific staff** (veterinarians, biologists, chemists and laboratory technicians)
- ✓ support staff.



International Reference Centres

At international level, IZSve has been appointed as

OIE Reference Laboratory for:

- ✓ Avian Influenza and Newcastle disease (OIE and FAO)
- ✓ Viral encephalo-retinopathy (OIE)
- ✓ Salmonellosis (OIE)

OIE Collaborating Centre for:

- ✓ Epidemiology, training and control of emerging avian diseases
- ✓ Diseases at the animal/human interface

FAO Reference Centre for:

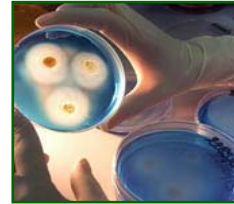
- ✓ Avian Influenza and Newcastle disease
- ✓ Rabies



National Reference Centres



Beekiping



Salmonellosis



Avian Influenza and
Newcastle Disease



Infectious
diseases at the
human-animal
interface



Fish, Mollusc and
Crustacean Diseases



Pet therapy



Rabies



Current perspectives

- ✓ Emerging zoonoses
- ✓ Development of new diagnostic techniques
- ✓ Vaccines, diagnostic reagents, kits...
- ✓ Risk analysis (e.g. food safety)
- ✓ Food safety (including vegetables)
- ✓ Risk communication (fact sheets, information and updates on risks, precautions...)
- ✓ Information technology (GIS applications, register of holdings)
- ✓ Training (post-doc courses, stage at international institutions)



IZSVe – International Cooperation

Projects funded by:

International organisations



- ❖ **OIE** Twinning project between IZSVe and CVVI (Vietnam) animal salmonellosis (2011 – 2015)
- ❖ **OIE** Twinning project between IZSVe and CVL-IVO (Iran) AI, NDV, other poultry major viral diseases (2012 – 2014)

- ❖ **FAO** – supporting activities on animal diseases in regions at risk (2012 – 2013)

- ❖ **FAO** - activities on AI, ND, rabies (2013)



- ❖ **WHO** Technical Assistance for the Butrinti Lagoon Shellfish Production (2011 – 2013)





IZSVe – International Cooperation

Projects funded by:

EFSA



- ❖ **Flurisk** – Development of a risk assessment methodological framework (2012 – 2013)

- ❖ **Risk Categorization for Aquatic Animal Health Surveillance** (2012 – 2013)

EU + others (EUREKA, LIFE+)



- ❖ **NOLESSBEES EUROSTARS** Optimizing a novel, safe and efficient RNA Interference protection strategy for honeybee Nosema disease (2011 – 2014)



- ❖ **RARITY LIFE+** Invasive Louisiana Red swamp and preserve native white clawed crayfish in FVG” (2011 – 2014)

- ❖ **NEAT** – Networking to enhance the use of economics in animal health, education, research and policy making in Europe and beyond





IZSve – International Cooperation

Projects funded by: EU 7FP



- ❖ **FLUPIG** Pathogenesis and transmission of influenza virus in pigs (2010 – 2014)
- ❖ **ESNIP III** European Surveillance Network for Influenza in Pigs (2010 – 2013)
- ❖ **PREDEMICS** – Prediction and Prevention of Emerging Zoonotic Viruses (2011 – 2016)
- ❖ **TARGETFISH** – Targeted diseases prophylaxis in European Fish Farming (2012 – 2017)



European
Commission

EC – EuropeAid

- ❖ Technical assistance for the Animal Health Department of the KVFA and the Food and Veterinary Laboratory (2015-2016)
- ❖ Improving of Consumer protection Against Zoonotic Diseases (2009 – 2013)
- ❖ Technical Assistance for the Control and Eradication of classical swine Fever and Rabies (2010 – 2013)
- ❖ Multiple Framework Contract - lot 1: Rural development and food security (2014 – 2015)



IZSve – International Cooperation

Projects funded by:

EC – DG Sanco

Training for Safer Food (BTSF) Organisation and implementation of training activities on:

- ❖ “Animal health and welfare” (2014 – 2015)
- ❖ Residues of veterinary medicinal products in food of animal origin (2014 – 2015)
 - ❖ Contingency planning and animal disease control (2014 – 2015)
 - ❖ Official supervision as regards semen, ova and embryos (2014 – 2015)

Others (Veneto Region)



- ❖ Transfer of skills in the agro-zootechnical sector in rural areas in Madagascar (2008 – 2013)

Istituto Zooprofilattico Sperimentale delle Venezie

www.izsvenezie.it